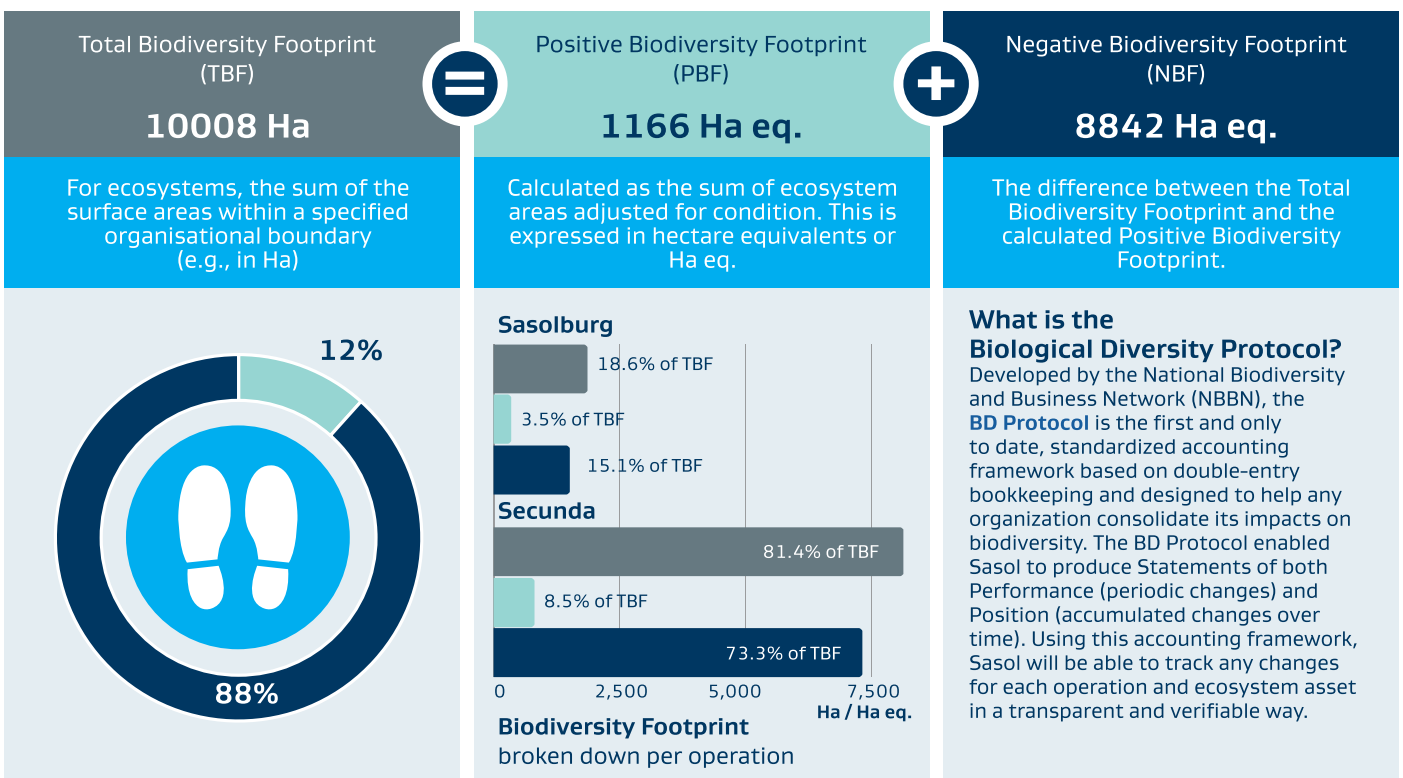


PILOT BIODIVERSITY FOOTPRINT FOR DIRECT OPERATIONS

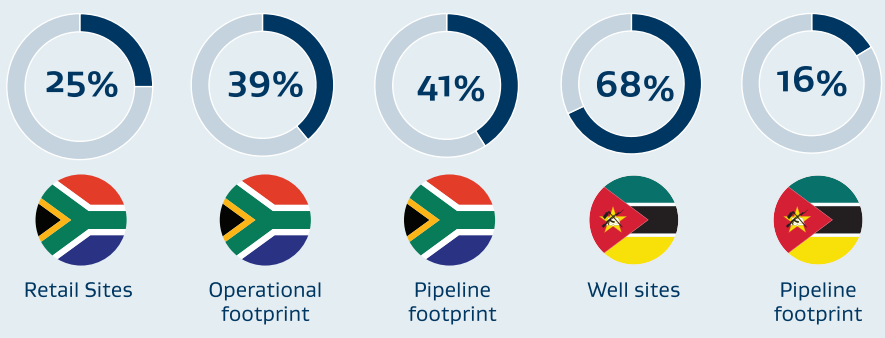
The Endangered Wildlife Trust has partnered with Sasol Energy to assist in the journey to mainstream biodiversity into our business. Every company has both negative and positive impacts on biodiversity, and through this partnership, Sasol joins other large international companies in using the BD Protocol to present a baseline of our biodiversity.

Draft assessment of Secunda and Sasolburg operations as per the Biological Diversity Protocol

A Biodiversity Footprint is the total impact (both positive and negative) that a business has on both ecosystems and species.



Sasol's footprint within proximity to Key Biodiversity Areas: South Africa and Mozambique



Key Biodiversity Areas (KBAs) include formally Protected Areas, Critical Biodiversity Areas (safeguarding in a natural condition is required to ensure a viable representative sample of ecosystem and species persists) and Ecological Support Areas (ensures long-term ecological function of the landscape is retained).



About the Endangered Wildlife Trust (EWT) and Biodiversity Disclosure Project (BDP)

The EWT is dedicated to conserving threatened species and ecosystems in southern and East Africa for the benefit of all people. This is achieved through targeted research and conservation action, implementing projects that address the threats facing species, and supporting sustainable natural resource management. The BDP is a project of EWT's **National Biodiversity and Business Network** established to guide corporates towards sustainability and the conservation of nature.